

Piping. Systems. Solutions.

FOR OVER 85 YEARS

# Victaulic Fire Protection Devices (ASHRAE Qatar ORYX Chapter)



# Victaulic Fire Protection Devices

- UL listed/FM approved
- Rated to 300 psi
- Available 1-1/2" – 8" sizes
- Straight through body design

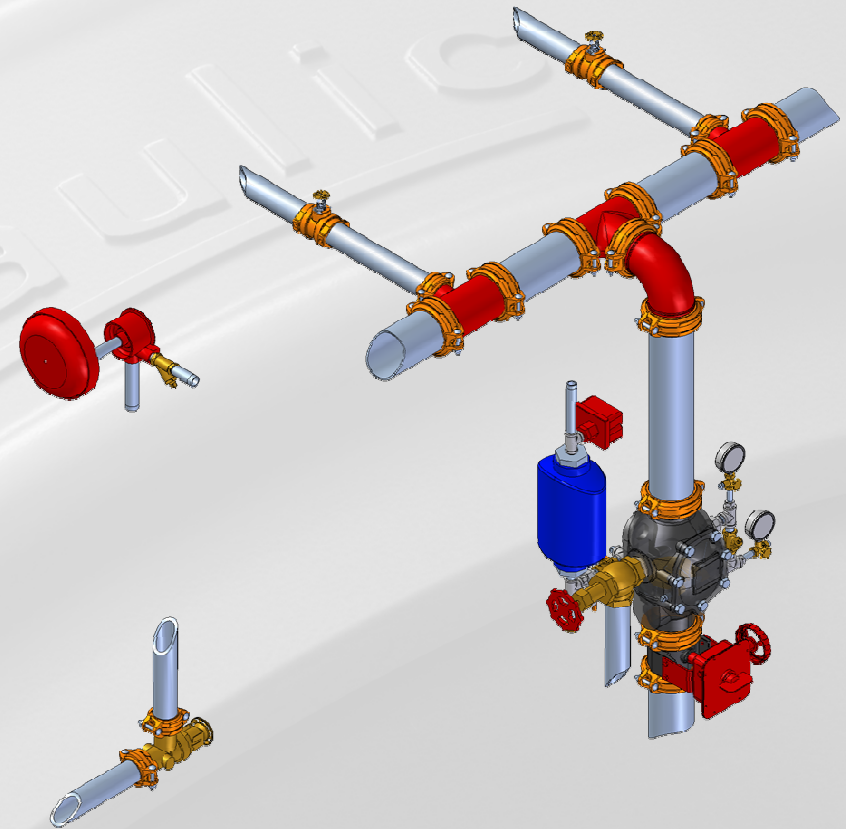


# Victaulic Fire Protection Devices

- **Wet System**
- **Dry System**
- **Deluge System**
- **Preaction System**
- **Fire-Pac**
- **Device Accessories**
- **Air Supplies and Accessories**

# Wet System

- Automatic sprinklers
- Pipes contain pressurized water
- Water discharges when sprinkler head opens



# Wet System

- **Series 751 FireLock Alarm Check Valve**

- **Features**

- **Bypass line**
- **Easy access to parts**
- **Replaceable clapper seal**
- **Corrosion prevention**
- **Sizes**



# Wet System

- **Series 751 FireLock Alarm Check Valve**
  - **Operation**
    - **Valve traps pressure**
    - **Surges-bypass loop**
    - **Sustained water flow lifts clapper**
    - **Alarms activated**



## Device Accessories

- **Series 752 FireLock Retard Chamber**
  - **Features**
    - **Reduces false alarms**
    - **Increased corrosion resistance**
    - **Used with S/751 Alarm Check Valve**



# Device Accessories

- **Series 752 FireLock Retard Chamber**
  - **Operation**
    - **Alarm valve operates**
    - **Water into retard chamber/drains through restrictor**
    - **Sustained water flow**
    - **Alarm activation/valve operation**





# Device Accessories

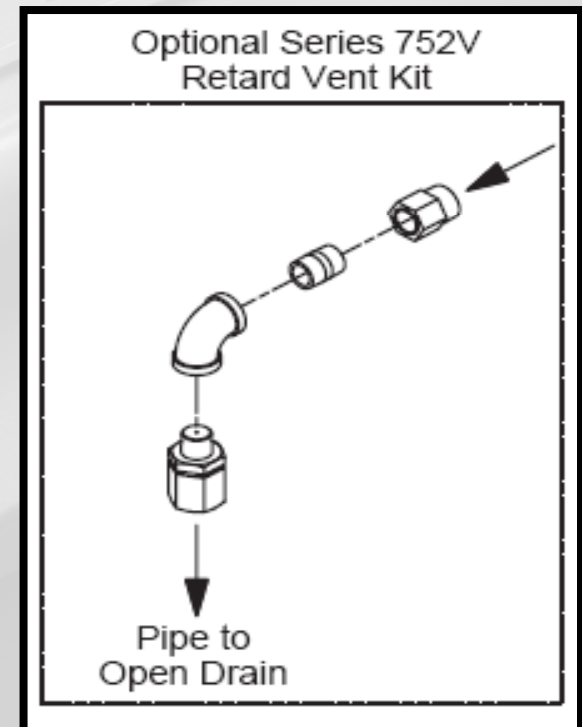
- **Series 752V Retard Vent Kit**

- **Features**

- **Must be used if:**

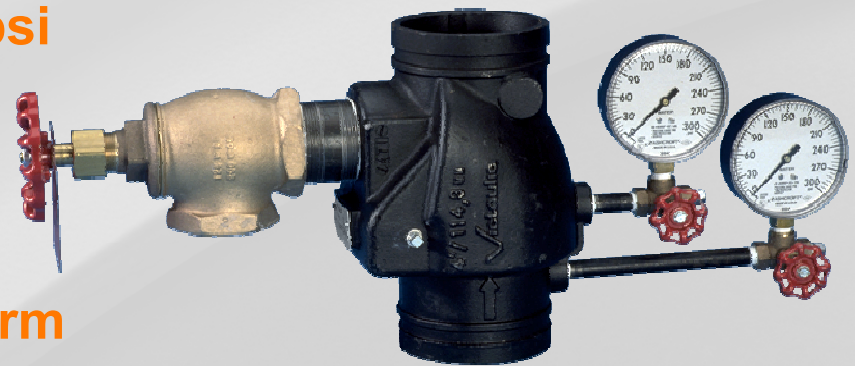
- **Electric alarm pressure switch/retard chamber/without water motor alarm**

- **Multiple valves share water motor alarm**



# Wet System

- **Series 717HR & 717R FireLock Riser Check Valve**
  - **Features**
    - **2” through 8” sizes**
    - **717 HR to 300psi**
    - **717R to 200psi(UL) 250 psi (FM)**
    - **Non-slamming**
    - **Accepts riser check kit**
    - **Can take the place of alarm valve**



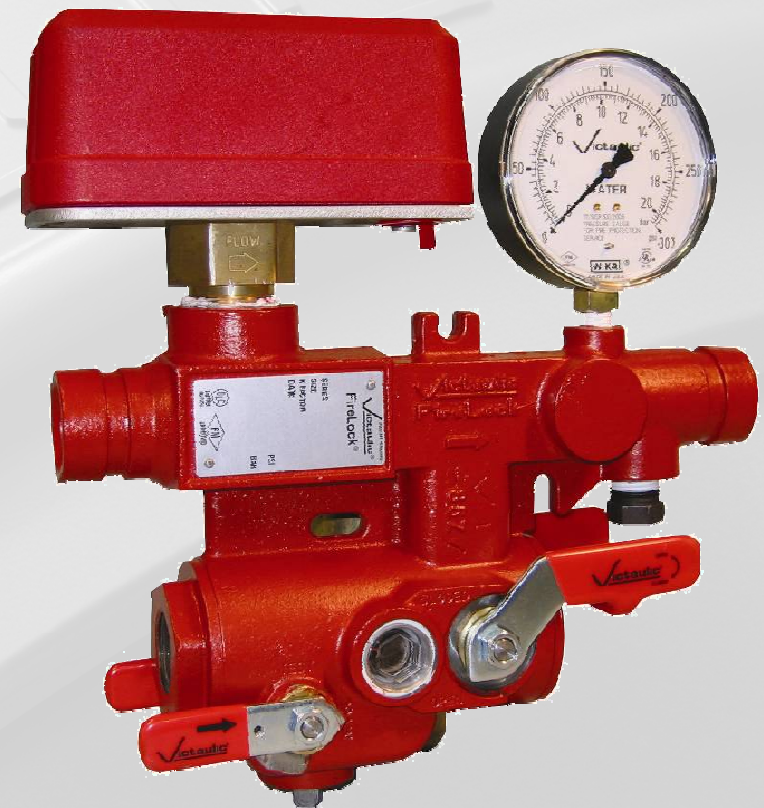
# Wet System

- **Style 747M Riser Manifold Assembly**
- **Style 747MP Riser Manifold Assembly (pressure relief version)**
  - **2 1/2" through 6" sizes**
  - **Rated to 300 psi**
  - **S/747MP includes 175 psi relief valve**



# Wet System

- Style 247 Riser Manifold Assembly
- Style 247P Riser Manifold Assembly (pressure relief version)
  - 1" through 2" sizes
  - Rated to 300 psi
  - Designed for NFPA 13, 13R, & 13D residential and commercial requirements
  - S/247P includes 175 psi relief valve

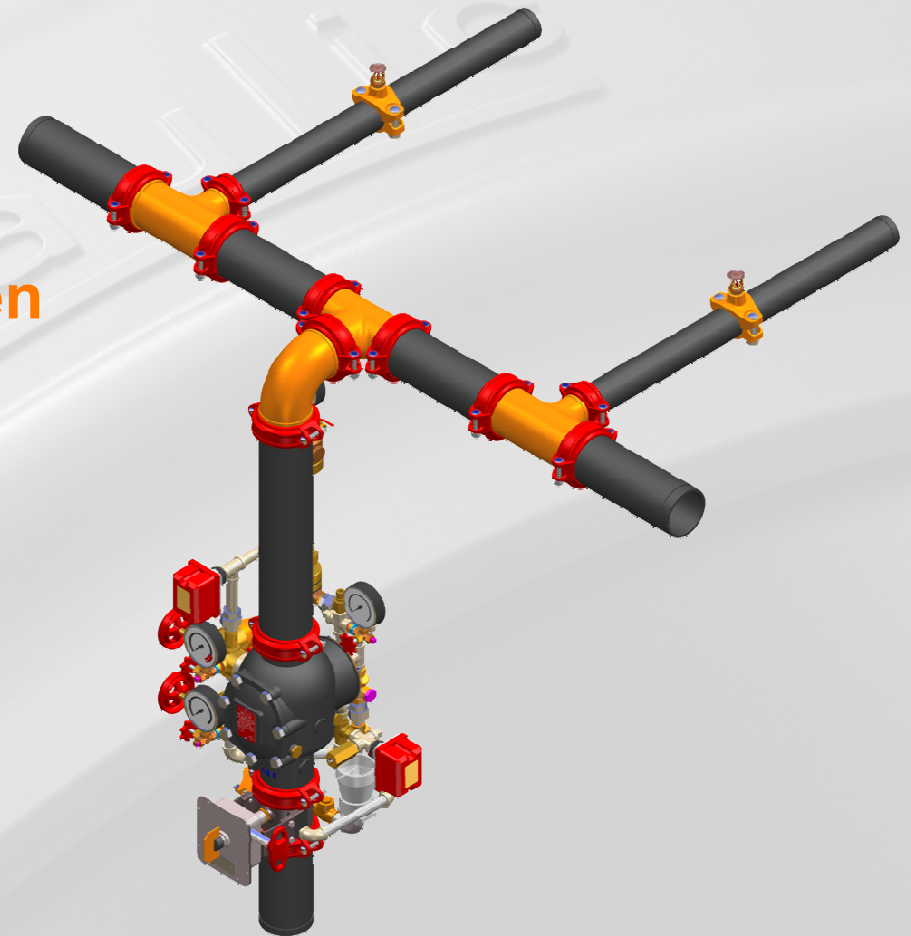


# Victaulic Fire Protection Devices

- **Wet System**
- **Dry System**
- **Deluge System**
- **Preaction System**
- **Fire-Pac**
- **Device Accessories**
- **Air Supplies and Accessories**

# Dry System

- Automatic sprinklers
- Pipes contain air/nitrogen
- Release allows water to open valve
- Water flows to open sprinkler heads



# Dry System

- **Series 768 FireLock NXT Dry Valve**
  - **Features**
    - **Low 13psi air requirement**
    - **Single trip point**
    - **Valve can be reset without opening the face plate**



# Dry System

- **Series 768 FireLock NXT Dry Valve**
  - **Operation**
    - **Diaphragm extended by water supply pressure**
    - **Actuator maintains water/controlled by system air (13 psi)**
    - **System air drop to 7 psi, LPA opens**





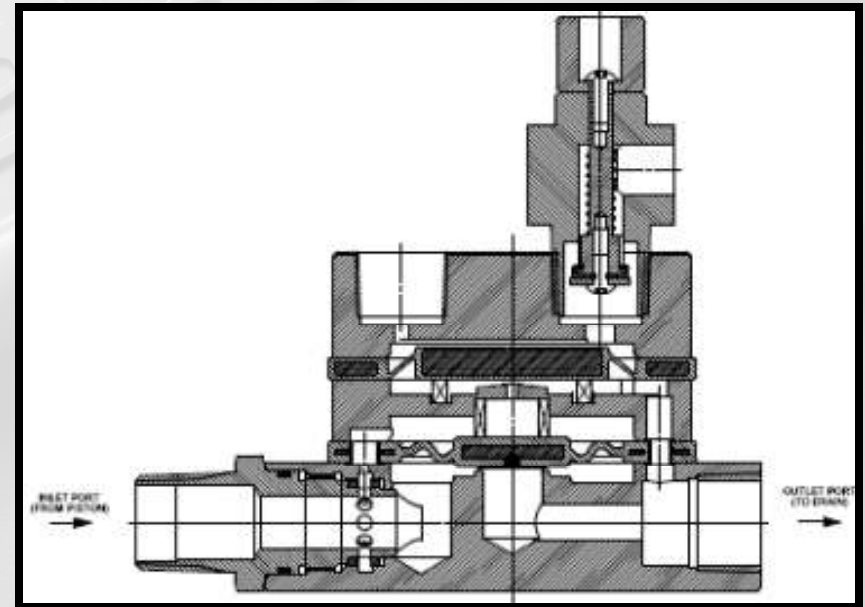
# Dry System

- **Series 776 Low Pressure Actuator**
  - **Features**
    - **13 psi set point**
    - **Single trip point**
    - **Eliminates air/water differential**



# Dry System

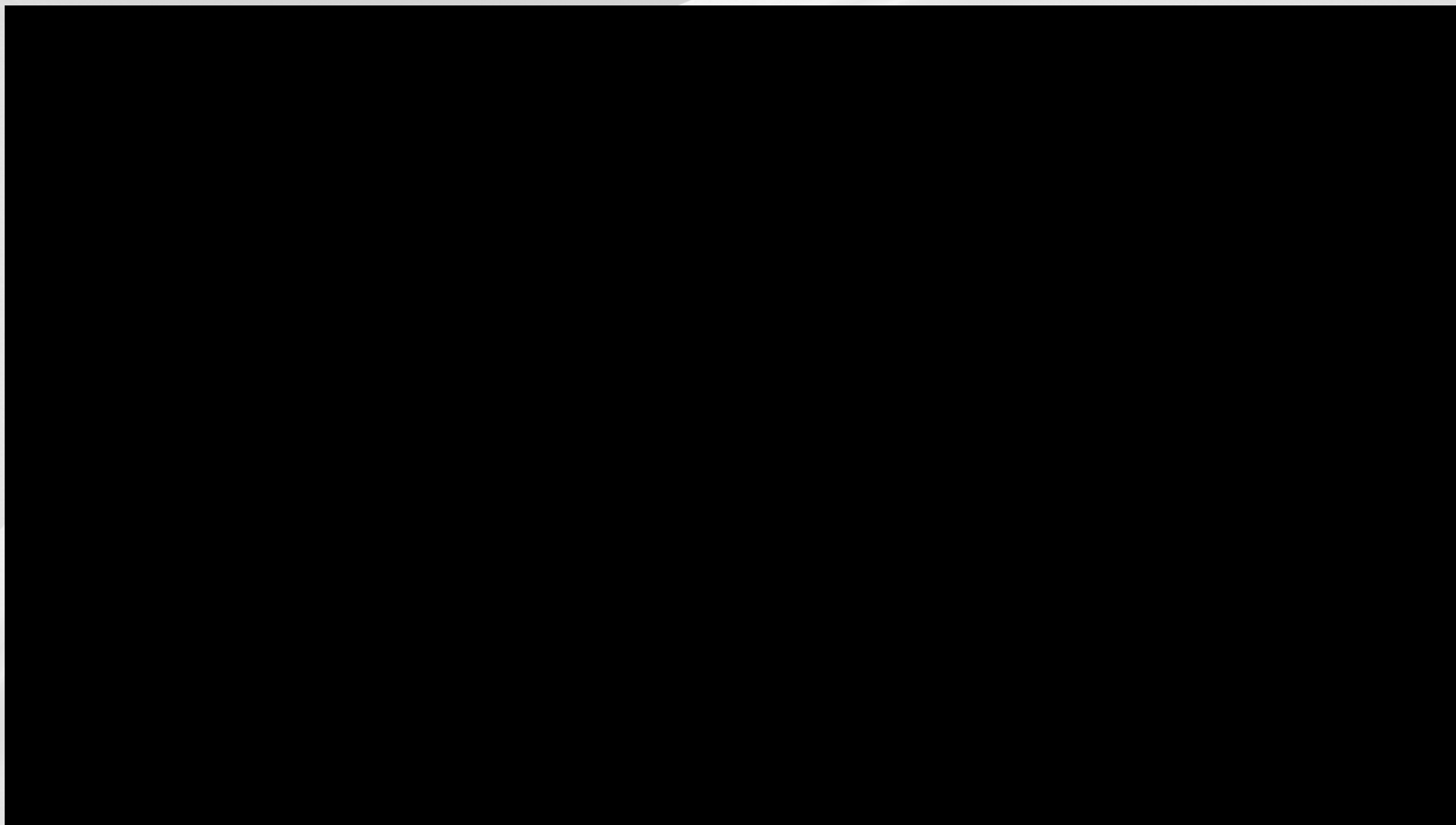
- **Series 776 Low Pressure Actuator**
  - **Operation**
    - **Initial charging**
    - **Charge line opened**
    - **System air to 7 psi**



Piping. Systems. Solutions.



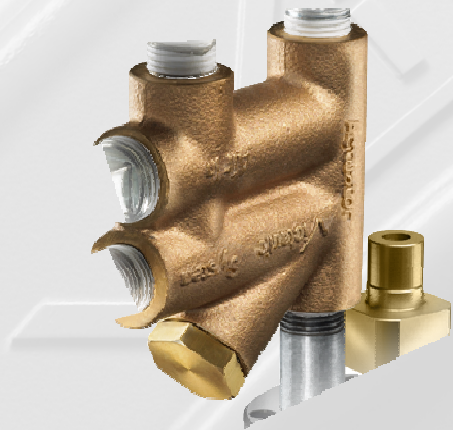
FOR OVER 85 YEARS



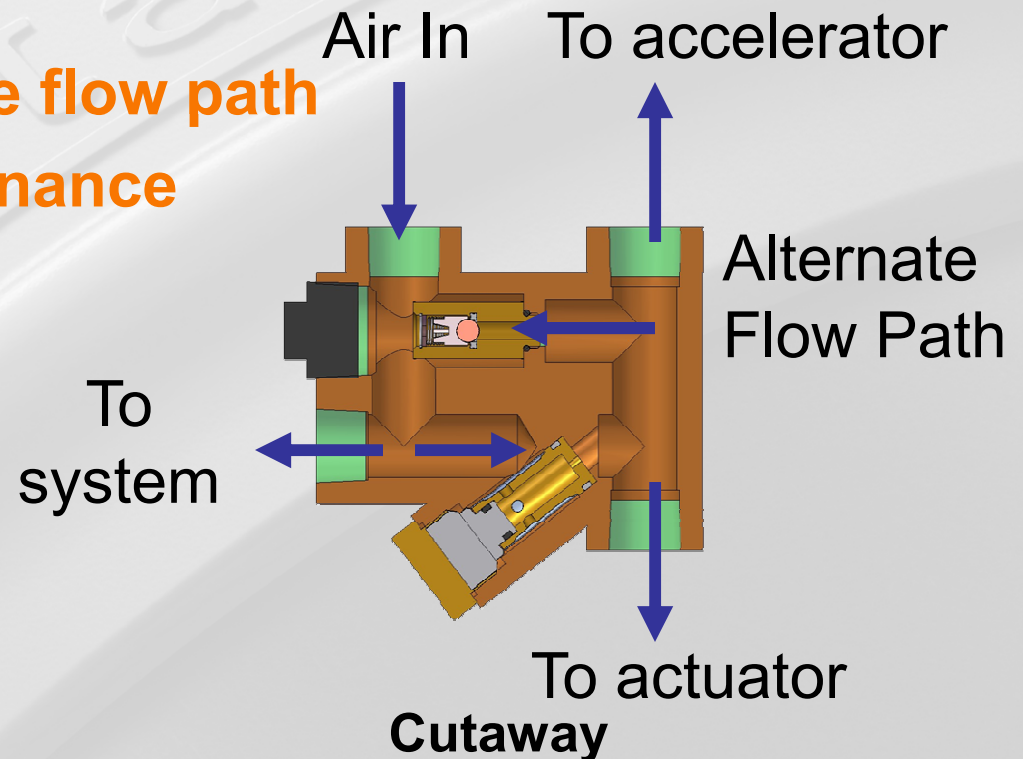
# Features and Benefits

## Air Feed Manifold Trim

- Reduced footprint of valve and minimized threaded joints
- Provides alternate flow path
- Simplifies maintenance

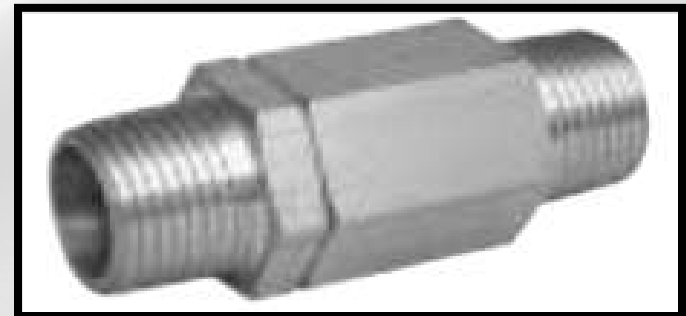


Air Feed Manifold



# Dry System

- **Series 748 FireLock Ball Check**
  - **Operation**
    - **Allows monitoring of air pressure loss**
    - **Minimizes water entering air trim**

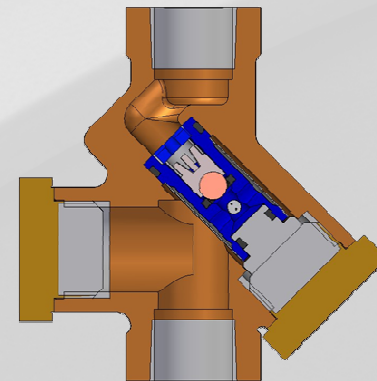


# Dry System

- **3-in-1 Valve**

- **Features**

- **Combines check valve, strainer and restrictor**
    - **Simplifies maintenance**

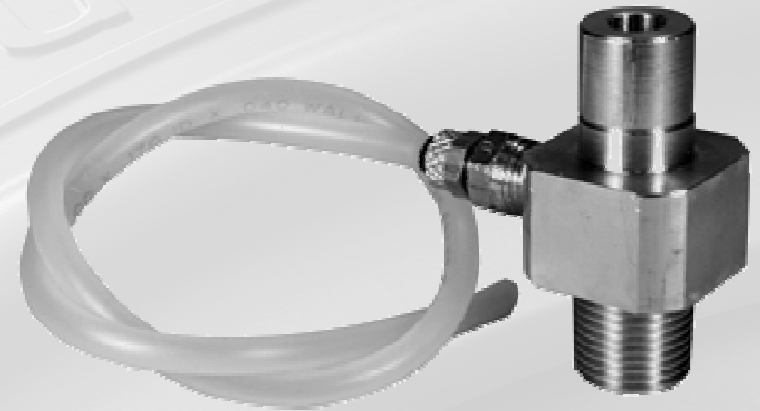


# Dry System

- **Series 749 FireLock Auto Drain**

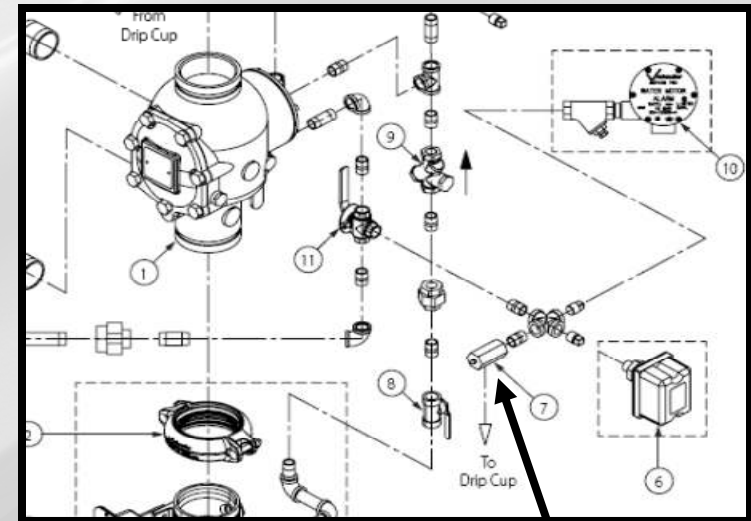
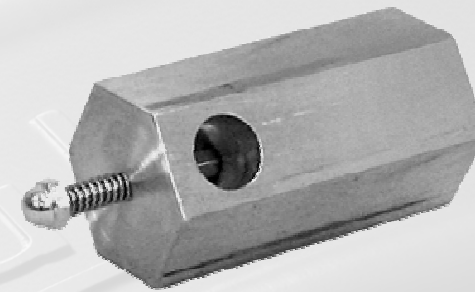
- **Operation**

- **Water pressure to 5 psi-  
drain opens**
- **Prevents diaphragm from  
re-pressurizing**
- **Manually reset**



# Dry System

- **Series 729 Drip Check Valve**
  - **Features**
    - Ensures alarm line open
    - Water flow velocity closes valve
    - Plunger checks alarm line pressurization



S/729 Drip Check

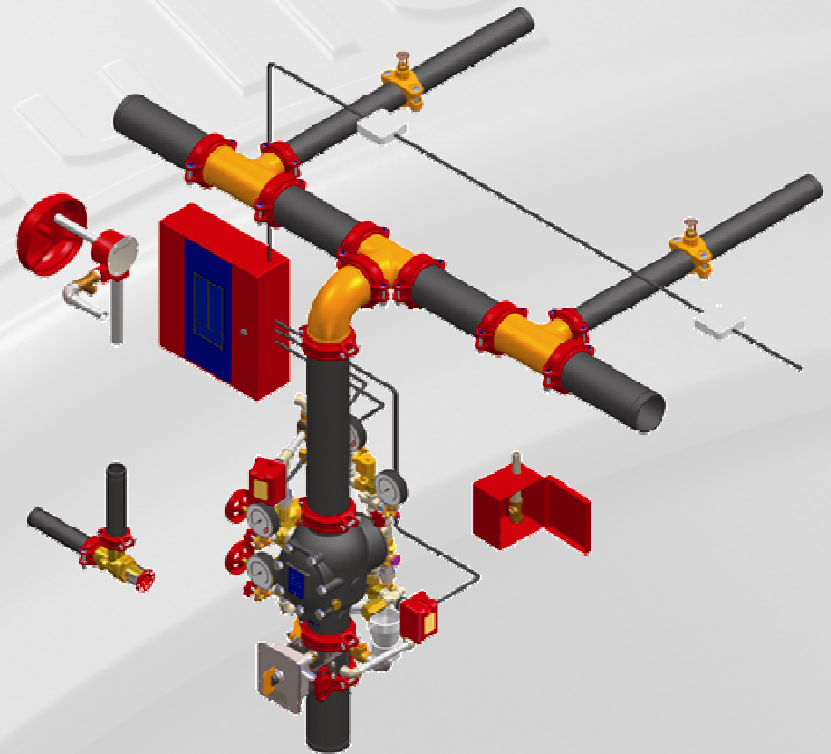


# Victaulic Fire Protection Devices

- **Wet System**
- **Dry System**
- ***Preaction System***
- **Deluge System**
- **Fire-Pac**
- **Device Accessories**
- **Air Supplies and Accessories**

# Preaction System

- Automatic sprinklers
- May or may not be pressurized
- Supplemental detection system



# Preaction System

- **Series 769 FireLock NXT Preaction Valve**
  - **Features**
    - **Low 13psi air requirement**
    - **Valve can be reset with out opening the face plate**
    - **Tapped for main drain and trim configurations**



# Preaction System

- **Series 769 FireLock NXT Preaction Valve**

- **Operation**

- **Diaphragm extended by water pressure**
- **Water maintained by release mechanism**
  - **Pneumatic**
  - **Electric**
  - **Both**



# Preaction System

- **Series 769 FireLock NXT Preaction Valve**
  - **Single Interlock**
    - **Valve operation**
      - **Event detection only**
    - **Pneumatic**
    - **Electric**



# Preaction System

- **Series 769 FireLock NXT Preaction Valve**
  - **Non-Interlock**
    - **Valve operation**
      - **Event detection**
      - **Loss of supervisory air**
    - **Pneumatic**
    - **Pneumatic/Electric**



# Preaction System

- **Series 769 FireLock NXT Preaction Valve**
  - **Double Interlock**
    - **Valve operation**
      - **Multiple detections by release mechanisms**
    - **Pneumatic/Electric**
    - **Electric-Pneumatic/Electric**
    - **Pneumatic/Pneumatic**



# Preaction System

- **Series 767 Electric/Pneumatic Double Interlock Actuator**
  - **Features**
    - **Single trip point**
    - **Low 13psi air requirement**
    - **Electrical detection and loss of system pressure**

