



ASHRAE QATAR ORYX CHAPTER

Advancing HVAC&R to serve humanity
and promote a sustainable world

NEWSLETTER NEWSLETTER NEWSLETTER NEWSLETTER NEWSLETTER NEWSLETTER

October 2011

The 2011 Region-At-Large (RAL) Chapters' Regional Conference (CRC)

The ASHRAE Falcon Chapter organized the Chapters Regional Conference (CRC) in Abu Dhabi.

This conference attended by world's prominent sustainability scientists, engineers and policy makers.

The CRC is an annual conference designed for regional at large ASHRAE chapters to connect and discuss the organization.

Qatar chapter was attended by Hassan Sultan as a delegate, Hani Hawamdeh as an alternate, Subrata Kar as membership promotion chair, Seenu Pillai as student activity chair, Kinan Fahs as research promotion chair, Ghassan Trabolsi as a CTTC chair and Mohamad Mokdad.

Five Awards was given to ASHRAE Qatar ORYX Chapter for the great achievement of the chapter during 2010-2011.



www.ashraeqatar.com

Inside this issue:

THE 2011 REGION-AT-LARGE (RAL) CHAPTERS' REGIONAL CONFERENCE (CRC)	1
BUILDING INFORMATION MODELING	2-3
ASHRAE EVENTS	4

Chapter Officer:

Hassan Sultan	President
Hani Hawamdeh	Pres.Elect
Seenu Pillai	Secretary
Kinan Fahs	Treasurer
Subrata Kar	V.P.
Hisham Ajjaj	V.P.

Board of Governors:

- Eugene Baustista
- Ghassan Trabolsi
- B.Durairajj
- Mohamad Mokdad
- Fadi Aboujamra
- Tony Khoury
- Ali Ibrahim
- Diwakar Lal

Newsletter Committee:

- Hassan Sultan - Chair
- Kinan Fahs - Member
- Eugene Bautista - Member

The president Hassan Sultan sent the following thanking email to the RAL Chairs:

Dear Friends,

It is an occasion to thank you once more for your good support given to our chapter for the great success we have achieved last year which has given us the chance to receive 5 No AWARDS during the CRC meeting held in Abu Dhabi this year and at the same we would like to highlight that we are planning to achieve better and better next year.

Thank you very much hoping to meet with you for the good success of our society , ASHRAE .



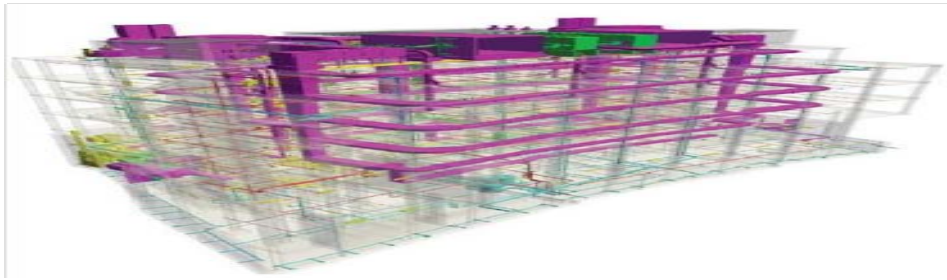
ASHRAE QATAR ORYX CHAPTER

Advancing HVAC&R to serve humanity
and promote a sustainable world

NEWSLETTER NEWSLETTER NEWSLETTER NEWSLETTER NEWSLETTER NEWSLETTER

Building Information Modeling

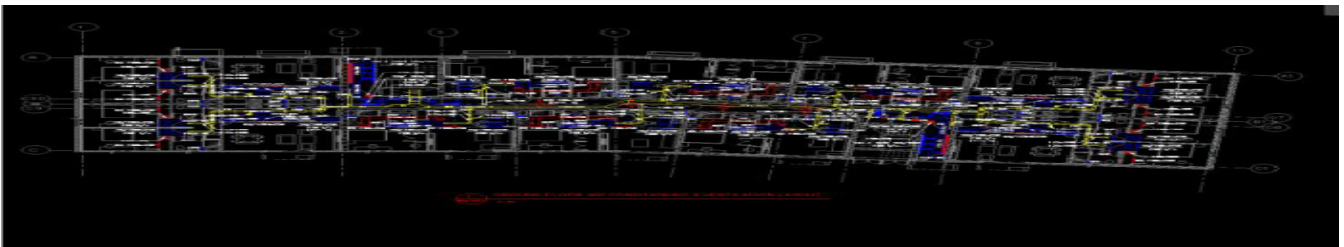
BIM is described as the process of generating and managing building data during its life cycle. Typically it uses three-dimensional, real-time, dynamic building modeling software (REVIT) to increase productivity in building design and construction.



The process produces the **Building Information Model (BIM)**, which encompasses building geometry, spatial relationships, geographic information, and quantities and properties of components. These different views are automatically consistent – in the sense that the objects are all of a consistent size, location, specification – since each object instance is defined only once, just as in reality. Drawing consistency eliminates many errors.

BIM needs a virtual building model in 3D as a basis

From working the traditional way –using 2D Software as a digital drawing board ...



... to creating a virtual building model with “intelligent” objects in 3D –including quantities and costs



Faisal Jassim Trading Co.
We bring life to your building



P.O. Box : 31859 Doha, Qatar. Tel : (+974) 44015777, Fax : (+974) 44015775 www.faisaljassim.ae



ASHRAE QATAR ORYX CHAPTER

Advancing HVAC&R to serve humanity and promote a sustainable world

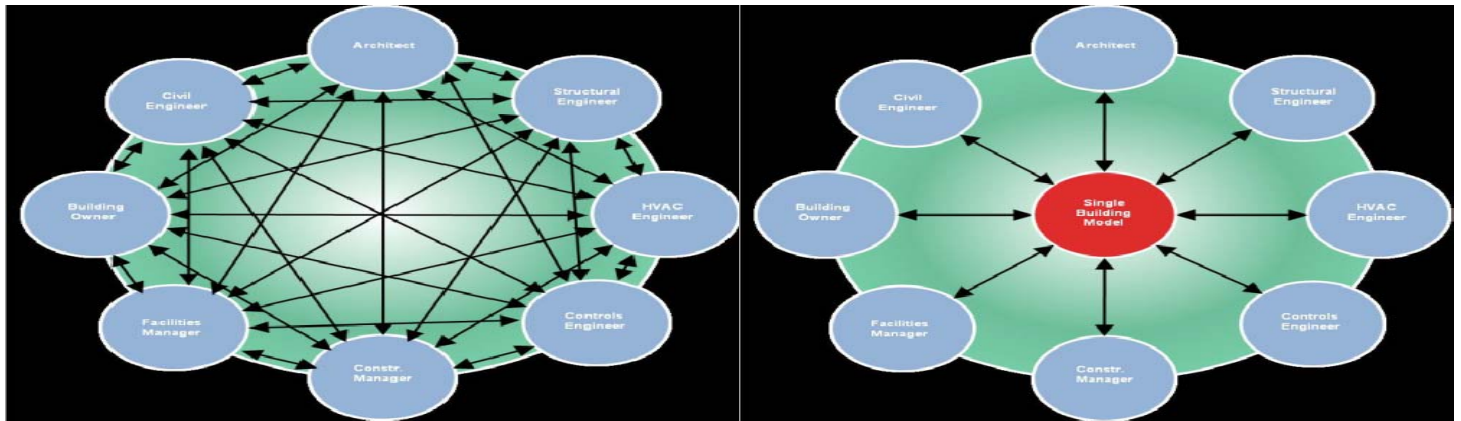
NEWSLETTER NEWSLETTER NEWSLETTER NEWSLETTER NEWSLETTER NEWSLETTER

Building process calls for better coordination

Pieces can carry attributes for selecting and ordering them automatically, providing cost estimates and well as material tracking and ordering. It eliminates many of the uncertainties found during the construction phase since they can be found during the design phase of the project and fixed so they do not occur during the actual construction phase.

Also, any changes during construction will be automatically updated to BIM and those changes will be made in the model. Modern BIM design tools go further. They define objects parametrically. That is, the objects are defined as parameters and relations to other objects, so that if a related object changes, this one will also.

The use of BIM goes beyond the design phase of the project and takes an important role during the construction phase of a project as well as the post construction phases and facility management. The entire purpose of BIM was to make the construction process more efficient and eliminate as many uncertainties as possible before starting the construction process.

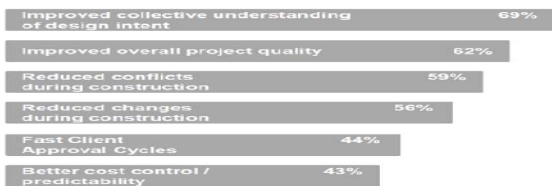


Adoption of BIM is increasing ,as benefits by time ,are more and more being substantiated:

BIM Adoption – North America vs. Europe



BIM Benefits Contributing the Most Value



Source: Internet survey of industry professionals, McGraw-Hill Construction, 2010



Hani Hawamdeh

President Elect-2011-2012

ALL ARTICLES, EVENTS PHOTOS AND MORE ARE AVAILABLE AT WWW.ASHRAEQATAR.COM.



ASHRAE QATAR ORYX CHAPTER

Advancing HVAC&R to serve humanity
and promote a sustainable world

NEWSLETTER NEWSLETTER NEWSLETTER NEWSLETTER NEWSLETTER NEWSLETTER

ASHRAE EVENTS

Topic: Grooved System Products Overview / Thermal Movement / Gasket Technology / Vibration Attenuation / Coupling Seismic Performance / Fire Protection Preaction, Deluge, Alarm Check Valves

Presented By: **Mr. David L. Hudson** – Senior Engineer

Presented By: **Mr. Ossama Al Masri** – Product Engineer

Sponsored By: M/s. Victaulic & Mechanical Engineers

Date: October 1st, 2011

The newsletter committee expresses its deep gratitude to KEO International for sponsoring printing 75 hard copies of each issue for distribution during Chapter events.



GREEN TECHNOLOGY AND CONT. CO. W.L.L.

P.O. Box : 35204, Doha - Qatar, Tel. : + 974 44478787, Fax : + 974 44478181, C.R. : 41291

Email : greentechdoha@yahoo.com / greentechdoha@gmail.com



ECOTHERM
Heat Transfer Technology
www.ecotherm.com

Solar Heating/cooling, water boilers, calorifiers, Large/small electric water heaters, Stainless Steel shell-&-tube HX



ROSENBERG
www.rosenberg-gmbh.com

AHU - Eurovent, VDI, DIN, ATEX Approved. FCU, Fan



EVAPCO
www.evapco.eu

Cooling Towers, evaporative coolers, Ice Thermal Storage



LAKOS
www.lakos.com

centrifugal solid-to-liquid patented filtration system



BLUE BOX GROUP
www.blueboxgroup.com

Precision A.C., Air-cooled and Water-cooled Screw Chillers, Roof-top Packaged A.C.Units (all with GREEN Refrigerants)



BELVEN
www.belven.com

Valves-Butter-Fly, Gate, Check, Ball